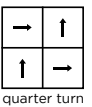
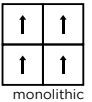


## technical specifications

Product Description	<b>Low carbon</b> level loop
Pile Yarn Description	100% <b>Econyl<sup>®</sup> regenerated recyclable</b> solution dyed nylon
Tile Dimensions	50cm x 50cm
Pile Yarn Weight	550g/m <sup>2</sup>
Total Weight	4000g/m <sup>2</sup>
Pile Height	4.3mm
Total Thickness	6.8mm
Construction	Tufted 1/10th gauge loop
Tufts per m <sup>2</sup> / Pile Density	177,165/m <sup>2</sup>
Backing Description	<b>BioBase<sup>™</sup> recycled</b> backing (recycled EN 14021)
Wear Classification	Class 33 heavy commercial use (BS EN 1307)
Luxury Rating Class	LC1
Flammability	Euroclass Bfl-s1
Thermal Resistance	Tog Rating: 0.43
Castor Chair Rating	BS EN 985 Pass - suitable for continuous use
Hexapod	BS ISO 10361: Method B:2000 3 to 4
Static Loading	BS 4939: 1987 (2003) Recovery >80% (24hrs)
Dynamic Loading	BS ISO 2094: 1999 (2005) Loss <20% (1000 impacts)
Body Voltage Test	BS ISO 6356:2000 <2kV
Colour Fastness To Light	BS EN ISO 105 - B02 Minimum Grade 6
Colour Fastness To Shampoo	BS 1006:UK-TB: 1990 Minimum Grade 4-5
Sound Absorption Coefficient	BS EN 354:2003
Reduction in Impact Noise	BS EN ISO 10140-3:2010 23dB
Reduction in Impact Noise at 1000Hz	BS EN ISO 10140-3:2010 35.3dB at 1000Hz
Number Of Tiles Per Box	20 (5m <sup>2</sup> )
VOC	Class A+
Warranty	15 years



FM 01440 EMS 784147

## eco<sub>2</sub>matters<sup>®</sup>

We are committed to helping deliver a sustainable future, because we believe that what we do **matters**. To help us deliver on this commitment, we have developed **eco<sub>2</sub>matters<sup>®</sup>**, our sustainability principles, supported by independent 3rd party verification.



**Journey to Net Zero & Beyond**



**Positive Environmental Impact**



**Social Values & Well Being**

Made from 100% **Econyl<sup>®</sup> regenerated recyclable** solution dyed nylon yarn and our unique **BioBase<sup>™</sup> recycled** backing, **infinity<sup>®</sup>** is **low carbon**. The colour palette of 16 colours with excellent soil hiding properties along with its high contrast speckled appearance makes it the ultimate product for high traffic areas.



**low carbon**

**infinity<sup>®</sup>** is **low carbon**



**take back service**

**Burmatex<sup>®</sup> reco<sub>2</sub>very** take back service provides a no landfill solution for your used tiles



**100% Econyl<sup>®</sup>**

**infinity<sup>®</sup>** is made from 100% **Econyl<sup>®</sup> regenerated recyclable** yarn



**100% certified renewable**

**Burmatex<sup>®</sup>** products are made using 100% certified **renewable** electricity



**BioBase<sup>™</sup> backing**

**infinity<sup>®</sup>** uses **BioBase<sup>™</sup> recycled** backing



**independently 3rd party verified**

**eco<sub>2</sub>matters<sup>®</sup>** declarations are independently 3rd party verified

**EPD**  
our products are supported by a 3rd party verified EPD

**LEED**  
our products contribute towards Leed accreditation

**SKA**  
our products adhere to SKA standards

**WELL Building Standards**  
Our products contribute to WELL Building Standards



### need a BIM object?

all our products have BIM objects available on our website

### need samples?

scan the QR code, call +44 (0) 1924 262525, visit our website or email us at [samples@burmatex.co.uk](mailto:samples@burmatex.co.uk)



contact us  
T +44 (0) 1924 262 525  
email: [sales@burmatex.co.uk](mailto:sales@burmatex.co.uk)

Burmatex Ltd  
Victoria Mills, The Green  
Ossett, West Yorkshire  
WF5 0AN, United Kingdom

[www.burmatex.co.uk](http://www.burmatex.co.uk)

## LRV values

Product code	Product colour name	CIE Y
34705	ice mineral	21.64
34701	slate grey	14.76
34702	silver salt	8.70
34703	stone shadow	4.56
34706	quartz sand	13.95
34704	gravel greige	9.17
34707	sepia fusion	10.13
34711	bronze brown	4.78
34712	cold cove	15.95
34708	cyan flux	11.22
34709	base blue	8.12
34710	navy element	4.71
34713	ultra yellow	16.75
34714	jade layer	14.01
34715	cherry shade	4.87
34716	purple prism	3.56