

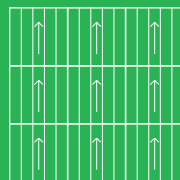
Experience Carpet Tiles

paragon
CARPET TILES

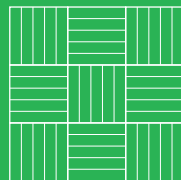


Workspace Cutpile

12 Colourways



BROADLOOM DESIGN



TESSELLATED DESIGN



LOWEST CARBON
EMISSIONS
TILE FACTORY IN THE EU



paragon 3R
RECOVER · RECYCLE · REUSE

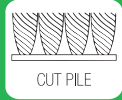


MADE IN BRITAIN

AVAILABLE
FROM STOCK

Workspace Cutpile

12 Colourways



Suitable for Commercial, Education and Retail markets

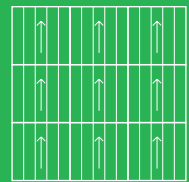
Heavy Contract

12 Colourways

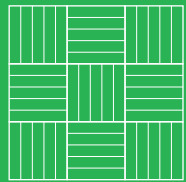
10 year Warranty

100% solution dyed nylon

100% Envirobase minimum of 50% recycled material



BROADLOOM DESIGN



TESSELLATED DESIGN



MADE IN BRITAIN

AVAILABLE FROM STOCK

Workspace Cutpile



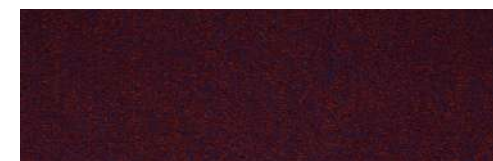
Workspace Outpile



Style	Tufted Cut Pile 1/10" gauge
Yarn Construction	100% solution dyed nylon
Pile Yarn Weight	850 gsm
Pile Height	5mm
Total Weight	4650 gsm
Pile Density	143,700 tufts per m2
Total Thickness	8.5mm
Backing	100% Envirobase - minimum of 75% recycled material
Additional Backing	100% Komfort Bac available on request
Dimensions	50cm x 50cm
Wear Classification	Heavy Contract Class 33
Luxury Class	LC1
Anti-static	Suitable for use with computers. Less than 2Kv
Colour Fastness	To Light (BS EN ISO105-B02) 6 To Water (BS EN ISO105-E01) 4 - 5 To Rubbing (BS EN ISO105-X12) 4 - 5 To Shampoo BS 1006 – UK – TB 4 - 5
Flammability	Floorcoverings tested to BS4790 Low Radius of Char (Hot Metal Nut Test) Euroclass Flammability (BS EN ISO 9239) Bfl-s1 (BS EN ISO 11925-2)
Castor Chair Test	BS EN 985 2.4 Suitable for use with castor chairs
Warranty	10 Years
VOC Content	E1 in relation to EN 14041:2004



Sky Blue (LRV - Y7.34)



Salsa (LRV - Y3.28)



Lilac (LRV - Y6.59)



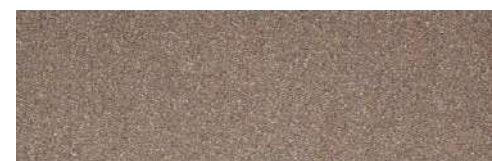
Grape Blue (LRV - Y6.91)



Biscay Blue (LRV - Y3.35)



Coastal Blue (LRV - Y3.59)



Wheat (LRV - Y16.70)



Gecko Green (LRV - Y9.72)



Nordic Green (LRV - Y8.15)



Cayenne (LRV - Y6.11)



Iron Grey (LRV - Y5.26)



Steel Grey (LRV - Y11.62)

INSTALLATION

Sub floors should be clean, dry and flat and prepared in accordance with BS5325. Timber floors should be covered with plywood or other appropriate sheet materials. For tiles use F Ball tackifier F41 or Laybond 79. Tiles may be laid tessellated or broadloom. Tiles should be allowed to condition for a minimum of 24 hours at the expected temperature and humidity prevailing when the building is in use. Further installation information is available from the Paragon Sales Office.

COLOUR

For technical reasons, as with all textile materials, it may not be possible to colour match from different batches. Orders requiring colour match should be placed at the same time. Production may therefore show variations to the sample card.

MAINTENANCE

It is recommended that a maintenance schedule be initiated from the date of installation to achieve maximum life expectancy of the product. Regular vacuum cleaning with a twin motored upright vacuum cleaner is essential. All spillages and stains should be attended to immediately. For detailed information, please consult the Paragon cleaning and maintenance guide. It is imperative that all internal carpets are well protected from outside soiling and moisture by the use of barrier matting such as MatWorks, also available from Paragon.



Farfield Park
Manvers
Wath-upon-Dearne
Rotherham, S63 5DB

T. +44 (0) 1709 763 839
F. +44 (0) 1709 763 813
E. sales@paragon-carpets.co.uk
W. www.paragon-carpets.co.uk

545333 12		EMS 596740	FM 596739		
EN 14041:2004 Product Type Bitumen backed tufted carpet tile Reaction to fire Slipperiness					
Class Bfl-s1 NPD					

Experience Carpet Tiles

paragon
CARPET TILES



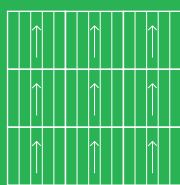
Workspace Cutpile

12 Colourways

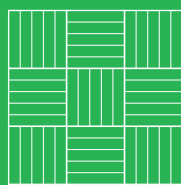
A Division of National Floorcoverings Ltd.
Farfield Park, Manvers, Wath-upon-Dearne, Rotherham, S63 5DB T. +44(0) 1709 763839
Samples Department: +44(0) 1709 763805.
Order Free Samples Online E. samples@paragon-carpets.co.uk
www.paragon-carpets.co.uk | www.mat-works.co.uk



i colour wheel www.paragon-app.com



BROADLOOM DESIGN



TESSELLATED DESIGN



AVAILABLE
FROM STOCK



Download our free apps NOW

Search Paragon Carpets

