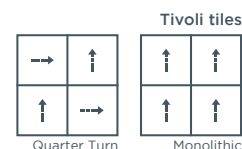
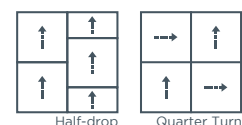
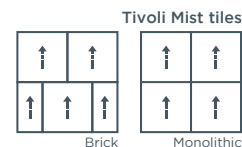


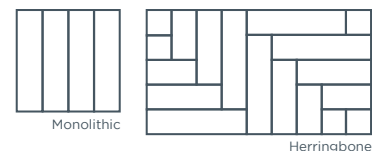
technical specifications

Product Name	Tivoli Mist
Product Description	Low Level Loop
Pile Yarn Description	100% Solution Dyed Nylon (Polyamide-PA)
Tile Dimensions	50 cm x 50 cm, 25 cm x 100 cm (planks)
Pile Yarn Weight	600g/m ²
Total Weight	4050g/m ²
Pile Height	4.0mm
Total Thickness	6.5mm
Gauge/ends per 10cm	1/10 th gauge 50 stitches
Tufts per m² / Pile Density	196,500/m ²
Backing Description	Accummen™, 75% recycled
Wear Classification	BS EN 1307 Heavy Commercial Use Class 33
Luxury Rating Class	LC2
Flammability	Euroclass Bfl-s1
Thermal Resistance	Tog Rating 0.39; ISO 8302: 0.04 m ² K/W
Castor Chair Rating	BS EN 985 Pass - suitable for continuous use
Hexapod	BS ISO 10361: Method B:2000 3 to 4
Static Loading	BS 4939: 1987 (2003) Recovery >80% (24hrs)
Dynamic Loading	BS ISO 2094: 1999 (2005) Loss <20% (1000 impacts)
Body Voltage Test	BS ISO 6356:2000 <2kV
Colour Fastness To Light	BS EN ISO 105 - B02 Minimum Grade 6
Colour Fastness To Shampoo	BS 1006:UK-TB: 1990 Minimum Grade 4-5
Sound Absorption Coefficient	BS EN 354:2003
Reduction in Impact Noise	BS EN ISO 10140-3:2010 23dB
Reduction in Impact Noise at 1000Hz	BS EN ISO 10140-3:2010 35.6dB
Number Of Tiles/Planks Per Box	20 (5m ²)

For best results we recommend*



For best carpet plank installation results we recommend*



*All tiles within these designs are unique and any linear aspects may not match from one tile to the next



This floor covering was made with renewable electricity



Certificate Number FM01440
BS EN ISO 9001:2015



Statement on level of emission of volatile substances in indoor air posing a toxic threat during inhaling - on a scale from A+ (very low-emission) to C (high-emission)



The Building Information Foundation, Finland. Certified building materials with low emission class M1



Environmental Product Declaration by independent third-party verification of the declaration and data, according to ISO 14025:2006

environmental information

- burmatex® products are EPD verified by an independent third-party verification of the declaration and data, according to ISO 14025:2006. For specific ratings, please refer to www.environdec.com
- burmatex® products qualify for SKA as they achieve one or more requested criteria
- burmatex® products can contribute to the WELL Building Standard™, which focuses on the people and healthy workspaces
- All burmatex® carpet/carpet tile/carpet plank ranges are made at its single UK manufacturing site
- Wherever possible, raw materials including yarn/fibre are sourced locally i.e. within 20 miles
- Over 75% of burmatex® Accummen™ backing comes from recycled materials
- Continuous assessment and improvement of manufacturing process to minimise use of raw materials/power
- All manufacturing waste is recycled and all electricity used is from renewable resources
- All burmatex® products are heavy contract with a 10 year guarantee for maximum useful life
- Certified, Class A+: very-low VOC Emission

LEED® v4 - Burmatex products can contribute towards satisfying the following credits for LEED v4: NC-v4/CI-v4 MRC2/MRC3 (Building product disclosure and optimization - environmental product declarations), MRC3/MRC4 (Building product disclosure and optimization - sourcing of raw materials), EQc1 (Enhanced indoor air quality strategies), EQc2 (Low-emitting materials), EQc6 (Interior lighting - Option 2. Lighting quality (E - H)) and EQc9 (Acoustic Performance). Products are not reviewed under LEED. LEED credit requirements cover the performance of materials in aggregate, not the performance of individual products or brands. For more information on LEED, visit www.usgbc.org/contact

Burmatex Ltd
Victoria Mills, The Green
Osssett, West Yorkshire
WF5 0AN
United Kingdom

T +44 (0) 1924 262 525
F +44 (0) 1924 280 033
UK email: projects@burmatex.co.uk
International email: international@burmatex.co.uk
www.burmatex.co.uk

Burmatex reserves the right to improve the specification of all products without prior notification. E&OE
Burmatex carpets and carpet tiles should be installed and used in full accordance with instructions at www.burmatex.co.uk and recognised trade standards.
Orders are subject to Burmatex terms and conditions of sale. See: www.burmatex.co.uk

LRV values for **tivoli mist**

Product code tiles	Product code planks	Product colour name	CIE Y	CIE L
32701	32901	south beach	14.27	44.89
32702	32902	palm springs	8.81	35.77
32703	32903	ocean drive	13.11	41.16
32704	32904	havana town	8.80	36.93
32705	32905	turtle bay	10.17	37.42
32706	32906	bora bora	14.24	43.03
32707	32907	baffin island	7.06	31.17
32708	32908	bergen city	4.69	24.36
32710	32910	icelandic isle	13.21	45.01
32711	32911	nordic fjord	7.47	33.95
32712	32912	polar drift	9.99	37.50
32713	32913	galapagos bay	5.75	27.32

LRV values for **tivoli**

Product code tiles	Product code planks	Product colour name	CIE Y	CIE L
20245	21145	dominica dawn	11.93	41.11
20242	21142	antigua steel	10.06	37.96
20207	21107	st lucia night	4.02	23.75
20275	21175	aruba dusk	7.02	32.03
20260	21160	st kitts basalt	2.91	19.68
20272	21172	cali coral	8.71	36.96
20267	21167	miami aqua	17.21	48.38
20269	21169	purple sky	9.10	36.18
20201	21101	guyana moss	9.06	36.10
20208	21108	belize greige	12.13	41.43
20268	21168	sri lanka sands	17.62	47.50
20253	21153	key west blue	2.69	18.77
20220	21120	barbados blue	6.23	29.98
20265	21165	kythira blue	18.19	47.37
20263	21163	naxos breeze	8.24	34.20
20266	21166	tiki yellow	16.09	47.71