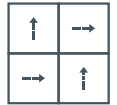


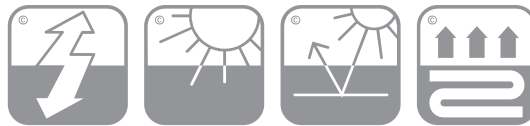
technical specifications

Product Name	Rialto
Product Description	Fibre Bonded
Pile Yarn Description	100% Solution Dyed Polypropylene
Tile Dimension	50cm x 50cm
Pile Weight	1000g/m ²
Total Weight	4450g/m ²
Pile Height	4.8mm
Total Thickness	7.8mm
Backing Description	Accummen™, 75% recycled
Wear Classification	Heavy Contract
Flammability	Euroclass Bfl-s1
Thermal Resistance	Tog Rating 0.84; ISO 8302: 0.10 m ² K/W
Body Voltage Test	BS ISO 6356:2000 <2kV
Colour Fastness To Light	BS EN ISO 105 – B02 Minimum grade 6
Colour Fastness To Shampoo	BS 1006:UK-TB: 1990 Minimum Grade 4
Number of Tiles per Box	12 (3m ²)

For best results we recommend



Quarter Turn



This floor covering was made with renewable electricity



Certificate Number FM01440
BS EN ISO 9001:2015



Environmental Product Declaration by independent third-party verification of the declaration and data, according to ISO 14025:2006

environmental information

- burmatex® products are EPD verified by an independent third-party verification of the declaration and data, according to ISO 14025:2006. For specific ratings, please refer to www.environdec.com
- burmatex® products qualify for SKA as they achieve one or more requested criteria
- burmatex® products can contribute to the WELL Building Standard™, which focuses on the people and healthy workspaces
- All burmatex® carpet/carpet tile/carpet plank ranges are made at its single UK manufacturing site
- Wherever possible, raw materials including yarn/fibre are sourced locally i.e. within 20 miles
- Over 75% of burmatex® Accummen™ backing comes from recycled materials
- Continuous assessment and improvement of manufacturing process to minimise use of raw materials/power
- All manufacturing waste is recycled and all electricity used is from renewable resources
- All burmatex® products are heavy contract with a 10 year guarantee for maximum useful life

Burmatex Ltd
Victoria Mills, The Green
Ossett, West Yorkshire
WF5 OAN
United Kingdom

T +44 (0) 1924 262 525
F +44 (0) 1924 280 033
UK email: projects@burmatex.co.uk
International email: international@burmatex.co.uk
www.burmatex.co.uk

Burmatex reserves the right to improve the specification of all products without prior notification. E&OE
Burmatex carpets and carpet tiles should be installed and used in full accordance with instructions at www.burmatex.co.uk and recognised trade standards.
Orders are subject to Burmatex terms and conditions of sale.
See: www.burmatex.co.uk

LRV values for **rialto**

Product code	Product colour name	CIE Y	CIE L
2620	electric blue	3.11	20.47
2628	ocean blue	3.79	22.97
2630	flame red	3.03	20.17
2631	sea blue	2.99	19.99
2634	aqua	6.13	29.75
2640	charcoal grey	3.81	23.02
2642	teal green	2.46	17.74
2650	steel grey	9.67	37.24
2656	summer sky	6.03	29.49
2666	deep purple	3.43	21.69
2670	black slate	1.28	11.11
2690	purple haze	3.31	21.25