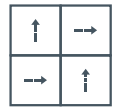


# technical specifications

|                            |  |
|----------------------------|--|
| Product Name               | Cordiale   |
| Product Description        | Fibre Bonded                                       |
| Pile Yarn Description      | 85% Polypropylene 15% Nylon                        |
| Tile Dimension             | 50cm x 50cm  |
| Pile Weight                | 950g/m <sup>2</sup>                                |
| Total Weight               | 4200g/m <sup>2</sup>                               |
| Total Thickness            | 7.8mm  |
| Backing Description        | Accummen™, 75% recycled                            |
| Wear Classification        | Heavy Contract                                     |
| Flammability               | Euroclass Bfl-s1                                   |
| Thermal Resistance         | Tog Rating 0.84; ISO 8302: 0.10 m <sup>2</sup> K/W |
| Castor Chair Rating        | BS EN 985 Pass - suitable for continuous use       |
| Static Loading             | BS 4939:1987 (2003) Recovery >80% (24hrs)          |
| Dynamic Loading            | BS ISO 2094:1999 (2005) Loss <20% (1000 impacts)   |
| Body Voltage Test          | BS ISO 6356:2000 <2kV                              |
| Colour Fastness To Light   | BS EN ISO 105 - B02 Minimum grade 6                |
| Colour Fastness To Shampoo | BS 1006:UK-TB: 1990 Minimum Grade 4                |
| Number of Tiles per Box    | 20 (5m <sup>2</sup> )                              |

For best results we recommend



Quarter Turn



This floor covering was made with renewable electricity



Certificate Number FM01440  
BS EN ISO 9001:2015



Statement on level of emission of volatile substances in indoor air posing a toxic threat during inhaling - on a scale from A+ (very low-emission) to C (high-emission)



Environmental Product Declaration by independent third-party verification of the declaration and data, according to ISO 14025:2006

## environmental information

- burmatex® products are EPD verified by an independent third-party verification of the declaration and data, according to ISO 14025:2006. For specific ratings, please refer to [www.environdec.com](http://www.environdec.com)
- burmatex® products qualify for SKA as they achieve one or more requested criteria
- burmatex® products can contribute to the WELL Building Standard™, which focuses on the people and healthy workspaces
- All burmatex® carpet/carpet tile/carpet plank ranges are made at its single UK manufacturing site
- Wherever possible, raw materials including yarn/fibre are sourced locally i.e. within 20 miles
- Over 75% of burmatex® Accummen™ backing comes from recycled materials
- Continuous assessment and improvement of manufacturing process to minimise use of raw materials/power
- All manufacturing waste is recycled and all electricity used is from renewable resources
- All burmatex® products are heavy contract with a 10 year guarantee for maximum useful life
- Certified, Class A+: very-low VOC Emission

**LEED® v4** - Burmatex products can contribute towards satisfying the following credits for LEED v4: NC-v4/CI-v4 MRC2/MRC3 (Building product disclosure and optimization - environmental product declarations), MRC3/MRC4 (Building product disclosure and optimization - sourcing of raw materials), EQc1 (Enhanced indoor air quality strategies), EQc2 (Low-emitting materials), EQc6 (Interior lighting - Option 2. Lighting quality (E - H)) and EQc9 (Acoustic Performance). Products are not reviewed under LEED. LEED credit requirements cover the performance of materials in aggregate, not the performance of individual products or brands. For more information on LEED, visit [www.usgbc.org/contact](http://www.usgbc.org/contact)

Burmatex Ltd  
Victoria Mills, The Green  
Ossett, West Yorkshire  
WF5 OAN  
United Kingdom

T +44 (0) 1924 262 525  
F +44 (0) 1924 280 033  
UK email: [projects@burmatex.co.uk](mailto:projects@burmatex.co.uk)  
International email: [international@burmatex.co.uk](mailto:international@burmatex.co.uk)  
[www.burmatex.co.uk](http://www.burmatex.co.uk)

Burmatex reserves the right to improve the specification of all products without prior notification. E&OE  
Burmatex carpets and carpet tiles should be installed and used in full accordance with instructions at [www.burmatex.co.uk](http://www.burmatex.co.uk) and recognised trade standards.  
Orders are subject to Burmatex terms and conditions of sale. See: [www.burmatex.co.uk](http://www.burmatex.co.uk)

## LRV values for cordiale

| Product code | Product colour name | CIE Y | CIE L |
|--------------|---------------------|-------|-------|
| 12101        | indian ebony        | 2.35  | 17.21 |
| 12102        | danish charcoal     | 3.19  | 20.78 |
| 12103        | netherlands slate   | 6.07  | 29.60 |
| 12104        | german steel        | 9.05  | 36.08 |
| 12105        | canadian diamond    | 11.70 | 40.73 |
| 12107        | czech blue          | 2.73  | 18.92 |
| 12108        | icelandic sea       | 5.19  | 27.28 |
| 12111        | andorran blue       | 3.49  | 21.89 |
| 12112        | portuguese purple   | 3.15  | 20.64 |
| 12113        | luxembourg lavender | 5.32  | 27.62 |
| 12114        | english blue        | 3.79  | 22.97 |
| 12117        | norwegian fjord     | 5.83  | 28.97 |
| 12119        | swiss ice           | 8.23  | 34.46 |
| 12122        | chinese turquoise   | 5.02  | 26.80 |
| 12123        | greek jade          | 7.12  | 32.08 |
| 12125        | monaco marina       | 6.59  | 30.85 |
| 12130        | lithuanian lime     | 8.83  | 35.65 |
| 12131        | cuban rum           | 3.02  | 20.14 |
| 12132        | belgian beige       | 8.50  | 35.00 |
| 12134        | latvian honey       | 13.24 | 43.12 |
| 12139        | ukrainian orange    | 10.09 | 38.01 |
| 12143        | chilean wine        | 3.76  | 22.86 |
| 12151        | spanish sunset      | 4.27  | 24.55 |
| 12180        | japanese indigo     | 3.20  | 20.83 |
| 12181        | russian blue        | 6.67  | 31.04 |
| 12182        | brazilian sky       | 9.40  | 36.75 |
| 12183        | colombian emerald   | 4.97  | 26.66 |
| 12184        | australian violet   | 2.71  | 18.84 |
| 12185        | hungarian paprika   | 4.52  | 25.32 |
| 12186        | cambodian silk      | 4.77  | 26.07 |
| 12187        | bolivian gold       | 13.47 | 43.46 |
| 12188        | costa rican sun     | 16.75 | 47.94 |